

# TEST REPORT

**Applicant:** Shenzhen Huafurui Technology Co., Ltd.  
**Address:** Unit 601-03, 6/F, Block A, Building 1, Ganfeng Technology Building, No. 993 Jiaxian Road, Xiangjiaotang Community, Bantian Street, Longgang District, Shenzhen

**The following sample(s) was/were submitted and identified on behalf of the client as:**

Product name: Tablet  
Model: TAB 60  
Trade mark: CUBOT  
Manufacturer: Shenzhen Huafurui Technology Co., Ltd.  
Address: Unit 601-03, 6/F, Block A, Building 1, Ganfeng Technology Building, No. 993 Jiaxian Road, Xiangjiaotang Community, Bantian Street, Longgang District, Shenzhen

Sample Received Date: 2024-01-05  
Testing Period: 2024-01-05 ~ 2024-02-01

**Test Requirement:**

As specified by client, to determine the Lead(Pb), Cadmium(Cd), Mercury(Hg), Hexavalent Chromium (Cr(VI)), Polybrominated Biphenyls(PBBs), Polybrominated Diphenyl Ethers(PBDEs), Bis-(2-ethylhexyl) Phthalate (DEHP), Benzyl butyl Phthalate (BBP), Dibutyl Phthalate (DBP) and Diisobutyl Phthalate(DIBP) contents in the submitted sample(s) in accordance with RoHS Directive (EU) 2015/863 amending Annex II to Directive 2011/65/EU.

**Test Result(s):** Please refer to the following page(s);

**Test Method:** Please refer to the following page(s);

**Test Conclusion:**

Based on the performed tests on submitted sample(s), the test results of Lead(Pb), Cadmium(Cd), Mercury(Hg), Hexavalent Chromium(Cr(VI)), Polybrominated Biphenyls(PBBs), Polybrominated Diphenyl Ethers(PBDEs), Bis(2-ethylhexyl) phthalate (DEHP), Benzyl butyl Phthalate (BBP), Dibutyl Phthalate (DBP) and Diisobutyl Phthalate(DIBP) comply with the limits as set by RoHS Directive (EU) 2015/863 amending Annex II to Directive 2011/65/EU.

Compiled by: Pre. Liao Reviewed by: Amy. Wu

Approved by: May Li Date: 2024-02-01

**Sample Description:**

No.	Part name	Description
1	Shell	Grey blue plastic frame of grey blue metal shell
2		Black cloth mesh with glue of grey blue metal shell
3		Transparent plastic lamp guide body of grey blue metal shell
4		Transparent plastic sheet with red black edge (with glue) of grey blue metal shell
5		Black plastic holder of SIM card holder
6		Transparent glass with black edge of panel
7		Black plastic frame of panel
8		Black plastic of audio jack
9		Silvery grey adhesive cloth
10		Black plastic adhesive tape
11		Black adhesive cloth
12		Yellow FPC
13	Screen	Black LCD screen
14		White plastic frame
15	Screen FPC	Yellow FPC
16		Black white plastic adhesive tape of white FPC
17	Speaker	Black plastic shell
18		Transparent double-sided adhesive of black plastic shell
19		Black colloid of cone
20		Red wire jacket
21		Black wire jacket
22	Camera assembly	Black plastic frame
23		Silvery grey foam adhesive cloth
24		Black plastic shell of camera
25		Black plastic base of camera
26		Silvery grey foam glue of camera
27	Motor	Black rubber sleeve
28		White plastic cover
29		Red wire jacket
30		Black wire jacket
31	PCBA1-mainboard PCBA	Blue PCB
32		Black rubber sleeve of MIC
33		Black wire jacket of MIC
34		Red wire jacket of MIC
35		Blue PCB of SMD PCB
36		Red grey plastic of type-c interface
37		Yellow transparent plastic adhesive tape
38	PCBA2-HXST-20-113	Green PCB
39	V1.0	Black wire jacket of antenna

No.	Part name	Description
40	Adapter	White plastic shell with silk lettering
41		Silvery metal plug pin of white plastic shell with silk lettering
42	Adapter PCBA	Yellow green PCB
43		Yellow plastic adhesive tape with lettering of transformer
44		Green plastic jacket of electrolytic capacitor
45		Brown plastic jacket of electrolytic capacitor
46		Black plastic jacket of electrolytic capacitor
47		Black rubber pad of electrolytic capacitor
48		White plastic of USB interface
49		Black plastic casing tube of color ring resistor
50		Data cable
51	Translucent plastic of USB interface	
52	White plastic of USB interface	
53	Beige plastic of type-c interface	
54	Blue PCB of type-c interface	
55	White exterior wire jacket	
56	Black wire jacket	
57	Red wire jacket	
58	Green wire jacket	
59	White wire jacket	
60	External cable	White encapsulation of USB interface
61		White plastic of USB interface
62		Beige plastic of type-c interface
63		Green PCB of type-c interface
64		White exterior wire jacket
65		Black wire jacket
66		Red wire jacket
67		Green wire jacket
68	White wire jacket	
69	Earphone	Black cloth mesh with glue of white plastic shell
70		Black foam rubber ring
71		Green PCB
72A		Tin solder of green PCB
73		White encapsulation of audio plug
74A		Silvery metal plug pin of audio plug
75		Black plastic of audio plug
76		White exterior wire jacket of audio plug
77	Battery	Transparent double-sided adhesive
78		Beige textured paper
79		Green PCB
80		Black wire jacket



No.	Part name	Description
81	Battery	Yellow wire jacket
82		Red wire jacket

**Test Result(s):**
**Lead(Pb), Cadmium(Cd), Mercury(Hg), Hexavalent Chromium (Cr(VI)), Polybrominated Biphenyls (PBBs), Polybrominated Diphenyl Ethers(PBDEs)**

Part No.	Test Items	XRF Screening Result(mg/kg)	Chemical Test Result(mg/kg)	Conclusion
1	Pb	BL	/	Pass
	Cd	BL	/	
	Hg	BL	/	
	Cr(Cr(VI))	BL	/	
	Br(PBBs&PBDEs)	BL	/	
2	Pb	BL	/	Pass
	Cd	BL	/	
	Hg	BL	/	
	Cr(Cr(VI))	BL	/	
	Br(PBBs&PBDEs)	BL	/	
3	Pb	BL	/	Pass
	Cd	BL	/	
	Hg	BL	/	
	Cr(Cr(VI))	BL	/	
	Br(PBBs&PBDEs)	BL	/	
4	Pb	BL	/	Pass
	Cd	BL	/	
	Hg	BL	/	
	Cr(Cr(VI))	BL	/	
	Br(PBBs&PBDEs)	BL	/	
5	Pb	BL	/	Pass
	Cd	BL	/	
	Hg	BL	/	
	Cr(Cr(VI))	BL	/	
	Br(PBBs&PBDEs)	BL	/	
6	Pb	IN	174	Pass
	Cd	BL	/	
	Hg	BL	/	
	Cr(Cr(VI))	BL	/	
	Br(PBBs&PBDEs)	BL	/	

7	Pb	BL	/	Pass
	Cd	BL	/	
	Hg	BL	/	
	Cr(Cr(VI))	BL	/	
	Br(PBBs&PBDEs)	BL	/	
8	Pb	BL	/	Pass
	Cd	BL	/	
	Hg	BL	/	
	Cr(Cr(VI))	BL	/	
	Br(PBBs&PBDEs)	BL	/	
9	Pb	BL	/	Pass
	Cd	BL	/	
	Hg	BL	/	
	Cr(Cr(VI))	BL	/	
	Br(PBBs&PBDEs)	BL	/	
10	Pb	BL	/	Pass
	Cd	BL	/	
	Hg	BL	/	
	Cr(Cr(VI))	BL	/	
	Br(PBBs&PBDEs)	BL	/	
11	Pb	BL	/	Pass
	Cd	BL	/	
	Hg	BL	/	
	Cr(Cr(VI))	BL	/	
	Br(PBBs&PBDEs)	BL	/	
12	Pb	BL	/	Pass
	Cd	BL	/	
	Hg	BL	/	
	Cr(Cr(VI))	BL	/	
	Br(PBBs&PBDEs)	BL	/	
13	Pb	BL	/	Pass
	Cd	BL	/	
	Hg	BL	/	
	Cr(Cr(VI))	BL	/	
	Br(PBBs&PBDEs)	BL	/	
14	Pb	BL	/	Pass
	Cd	BL	/	
	Hg	BL	/	
	Cr(Cr(VI))	BL	/	
	Br(PBBs&PBDEs)	BL	/	

15	Pb	BL	/	Pass
	Cd	BL	/	
	Hg	BL	/	
	Cr(Cr(VI))	BL	/	
	Br(PBBs&PBDEs)	BL	/	
16	Pb	BL	/	Pass
	Cd	BL	/	
	Hg	BL	/	
	Cr(Cr(VI))	BL	/	
	Br(PBBs&PBDEs)	BL	/	
17	Pb	BL	/	Pass
	Cd	BL	/	
	Hg	BL	/	
	Cr(Cr(VI))	BL	/	
	Br(PBBs&PBDEs)	BL	/	
18	Pb	BL	/	Pass
	Cd	BL	/	
	Hg	BL	/	
	Cr(Cr(VI))	BL	/	
	Br(PBBs&PBDEs)	BL	/	
19	Pb	BL	/	Pass
	Cd	BL	/	
	Hg	BL	/	
	Cr(Cr(VI))	BL	/	
	Br(PBBs&PBDEs)	BL	/	
20	Pb	BL	/	Pass
	Cd	BL	/	
	Hg	BL	/	
	Cr(Cr(VI))	BL	/	
	Br(PBBs&PBDEs)	BL	/	
21	Pb	BL	/	Pass
	Cd	BL	/	
	Hg	BL	/	
	Cr(Cr(VI))	BL	/	
	Br(PBBs&PBDEs)	BL	/	
22	Pb	BL	/	Pass
	Cd	BL	/	
	Hg	BL	/	
	Cr(Cr(VI))	BL	/	
	Br(PBBs&PBDEs)	BL	/	



23	Pb	BL	/	Pass
	Cd	BL	/	
	Hg	BL	/	
	Cr(Cr(VI))	BL	/	
	Br(PBBs&PBDEs)	BL	/	
24	Pb	BL	/	Pass
	Cd	BL	/	
	Hg	BL	/	
	Cr(Cr(VI))	BL	/	
	Br(PBBs&PBDEs)	BL	/	
25	Pb	BL	/	Pass
	Cd	BL	/	
	Hg	BL	/	
	Cr(Cr(VI))	BL	/	
	Br(PBBs&PBDEs)	BL	/	
26	Pb	BL	/	Pass
	Cd	BL	/	
	Hg	BL	/	
	Cr(Cr(VI))	BL	/	
	Br(PBBs&PBDEs)	BL	/	
27	Pb	BL	/	Pass
	Cd	BL	/	
	Hg	BL	/	
	Cr(Cr(VI))	BL	/	
	Br(PBBs&PBDEs)	BL	/	
28	Pb	BL	/	Pass
	Cd	BL	/	
	Hg	BL	/	
	Cr(Cr(VI))	BL	/	
	Br(PBBs&PBDEs)	BL	/	
29	Pb	BL	/	Pass
	Cd	BL	/	
	Hg	BL	/	
	Cr(Cr(VI))	BL	/	
	Br(PBBs&PBDEs)	BL	/	
30	Pb	BL	/	Pass
	Cd	BL	/	
	Hg	BL	/	
	Cr(Cr(VI))	BL	/	
	Br(PBBs&PBDEs)	BL	/	

31	Pb	BL	/	Pass
	Cd	BL	/	
	Hg	BL	/	
	Cr(Cr(VI))	BL	/	
	Br(PBBs&PBDEs)	IN	N.D.	
32	Pb	BL	/	Pass
	Cd	BL	/	
	Hg	BL	/	
	Cr(Cr(VI))	BL	/	
	Br(PBBs&PBDEs)	BL	/	
33	Pb	BL	/	Pass
	Cd	BL	/	
	Hg	BL	/	
	Cr(Cr(VI))	BL	/	
	Br(PBBs&PBDEs)	BL	/	
34	Pb	BL	/	Pass
	Cd	BL	/	
	Hg	BL	/	
	Cr(Cr(VI))	BL	/	
	Br(PBBs&PBDEs)	BL	/	
35	Pb	BL	/	Pass
	Cd	BL	/	
	Hg	BL	/	
	Cr(Cr(VI))	BL	/	
	Br(PBBs&PBDEs)	IN	N.D.	
36	Pb	BL	/	Pass
	Cd	BL	/	
	Hg	BL	/	
	Cr(Cr(VI))	BL	/	
	Br(PBBs&PBDEs)	BL	/	
37	Pb	BL	/	Pass
	Cd	BL	/	
	Hg	BL	/	
	Cr(Cr(VI))	IN	N.D.	
	Br(PBBs&PBDEs)	BL	/	
38	Pb	BL	/	Pass
	Cd	BL	/	
	Hg	BL	/	
	Cr(Cr(VI))	BL	/	
	Br(PBBs&PBDEs)	BL	/	



39	Pb	BL	/	Pass
	Cd	BL	/	
	Hg	BL	/	
	Cr(Cr(VI))	BL	/	
	Br(PBBs&PBDEs)	BL	/	
40	Pb	BL	/	Pass
	Cd	BL	/	
	Hg	BL	/	
	Cr(Cr(VI))	BL	/	
	Br(PBBs&PBDEs)	BL	/	
41	Pb	BL	/	Pass
	Cd	BL	/	
	Hg	BL	/	
	Cr(Cr(VI))	BL	/	
	Br(PBBs&PBDEs)	/	/	
42	Pb	BL	/	Pass
	Cd	BL	/	
	Hg	BL	/	
	Cr(Cr(VI))	BL	/	
	Br(PBBs&PBDEs)	IN	N.D.	
43	Pb	BL	/	Pass
	Cd	BL	/	
	Hg	BL	/	
	Cr(Cr(VI))	BL	/	
	Br(PBBs&PBDEs)	BL	/	
44	Pb	BL	/	Pass
	Cd	BL	/	
	Hg	BL	/	
	Cr(Cr(VI))	BL	/	
	Br(PBBs&PBDEs)	BL	/	
45	Pb	BL	/	Pass
	Cd	BL	/	
	Hg	BL	/	
	Cr(Cr(VI))	BL	/	
	Br(PBBs&PBDEs)	BL	/	
46	Pb	BL	/	Pass
	Cd	BL	/	
	Hg	BL	/	
	Cr(Cr(VI))	BL	/	
	Br(PBBs&PBDEs)	BL	/	

47	Pb	BL	/	Pass
	Cd	BL	/	
	Hg	BL	/	
	Cr(Cr(VI))	BL	/	
	Br(PBBs&PBDEs)	BL	/	
48	Pb	BL	/	Pass
	Cd	BL	/	
	Hg	BL	/	
	Cr(Cr(VI))	BL	/	
	Br(PBBs&PBDEs)	IN	N.D.	
49	Pb	BL	/	Pass
	Cd	BL	/	
	Hg	BL	/	
	Cr(Cr(VI))	BL	/	
	Br(PBBs&PBDEs)	BL	/	
50	Pb	BL	/	Pass
	Cd	BL	/	
	Hg	BL	/	
	Cr(Cr(VI))	BL	/	
	Br(PBBs&PBDEs)	BL	/	
51	Pb	BL	/	Pass
	Cd	BL	/	
	Hg	BL	/	
	Cr(Cr(VI))	BL	/	
	Br(PBBs&PBDEs)	BL	/	
52	Pb	BL	/	Pass
	Cd	BL	/	
	Hg	BL	/	
	Cr(Cr(VI))	BL	/	
	Br(PBBs&PBDEs)	BL	/	
53	Pb	BL	/	Pass
	Cd	BL	/	
	Hg	BL	/	
	Cr(Cr(VI))	BL	/	
	Br(PBBs&PBDEs)	BL	/	
54	Pb	BL	/	Pass
	Cd	BL	/	
	Hg	BL	/	
	Cr(Cr(VI))	BL	/	
	Br(PBBs&PBDEs)	BL	/	

55	Pb	BL	/	Pass
	Cd	BL	/	
	Hg	BL	/	
	Cr(Cr(VI))	BL	/	
	Br(PBBs&PBDEs)	BL	/	
56	Pb	BL	/	Pass
	Cd	BL	/	
	Hg	BL	/	
	Cr(Cr(VI))	BL	/	
	Br(PBBs&PBDEs)	BL	/	
57	Pb	BL	/	Pass
	Cd	BL	/	
	Hg	BL	/	
	Cr(Cr(VI))	BL	/	
	Br(PBBs&PBDEs)	BL	/	
58	Pb	BL	/	Pass
	Cd	BL	/	
	Hg	BL	/	
	Cr(Cr(VI))	BL	/	
	Br(PBBs&PBDEs)	BL	/	
59	Pb	BL	/	Pass
	Cd	BL	/	
	Hg	BL	/	
	Cr(Cr(VI))	BL	/	
	Br(PBBs&PBDEs)	BL	/	
60	Pb	BL	/	Pass
	Cd	BL	/	
	Hg	BL	/	
	Cr(Cr(VI))	BL	/	
	Br(PBBs&PBDEs)	BL	/	
61	Pb	BL	/	Pass
	Cd	BL	/	
	Hg	BL	/	
	Cr(Cr(VI))	BL	/	
	Br(PBBs&PBDEs)	IN	N.D.	
62	Pb	BL	/	Pass
	Cd	BL	/	
	Hg	BL	/	
	Cr(Cr(VI))	BL	/	
	Br(PBBs&PBDEs)	BL	/	



63	Pb	BL	/	Pass
	Cd	BL	/	
	Hg	BL	/	
	Cr(Cr(VI))	BL	/	
	Br(PBBs&PBDEs)	BL	/	
64	Pb	BL	/	Pass
	Cd	BL	/	
	Hg	BL	/	
	Cr(Cr(VI))	BL	/	
	Br(PBBs&PBDEs)	BL	/	
65	Pb	BL	/	Pass
	Cd	BL	/	
	Hg	BL	/	
	Cr(Cr(VI))	BL	/	
	Br(PBBs&PBDEs)	BL	/	
66	Pb	BL	/	Pass
	Cd	BL	/	
	Hg	BL	/	
	Cr(Cr(VI))	BL	/	
	Br(PBBs&PBDEs)	BL	/	
67	Pb	BL	/	Pass
	Cd	BL	/	
	Hg	BL	/	
	Cr(Cr(VI))	BL	/	
	Br(PBBs&PBDEs)	BL	/	
68	Pb	BL	/	Pass
	Cd	BL	/	
	Hg	BL	/	
	Cr(Cr(VI))	BL	/	
	Br(PBBs&PBDEs)	BL	/	
69	Pb	BL	/	Pass
	Cd	BL	/	
	Hg	BL	/	
	Cr(Cr(VI))	IN	N.D.	
	Br(PBBs&PBDEs)	BL	/	
70	Pb	BL	/	Pass
	Cd	BL	/	
	Hg	BL	/	
	Cr(Cr(VI))	BL	/	
	Br(PBBs&PBDEs)	BL	/	

71	Pb	BL	/	Pass
	Cd	BL	/	
	Hg	BL	/	
	Cr(Cr(VI))	BL	/	
	Br(PBBs&PBDEs)	BL	/	
A	Pb	BL	/	Pass
	Cd	BL	/	
	Hg	BL	/	
	Cr(Cr(VI))	BL	/	
	Br(PBBs&PBDEs)	/	/	
73	Pb	BL	/	Pass
	Cd	BL	/	
	Hg	BL	/	
	Cr(Cr(VI))	BL	/	
	Br(PBBs&PBDEs)	BL	/	
74A	Pb	OL	23865 <sup>#1</sup>	Pass
	Cd	IN	12	
	Hg	BL	/	
	Cr(Cr(VI))	BL	/	
	Br(PBBs&PBDEs)	/	/	
75	Pb	BL	/	Pass
	Cd	BL	/	
	Hg	BL	/	
	Cr(Cr(VI))	BL	/	
	Br(PBBs&PBDEs)	BL	/	
76	Pb	BL	/	Pass
	Cd	BL	/	
	Hg	BL	/	
	Cr(Cr(VI))	BL	/	
	Br(PBBs&PBDEs)	BL	/	
77	Pb	BL	/	Pass
	Cd	BL	/	
	Hg	BL	/	
	Cr(Cr(VI))	BL	/	
	Br(PBBs&PBDEs)	BL	/	
78	Pb	BL	/	Pass
	Cd	BL	/	
	Hg	BL	/	
	Cr(Cr(VI))	BL	/	
	Br(PBBs&PBDEs)	BL	/	

79	Pb	BL	/	Pass
	Cd	BL	/	
	Hg	BL	/	
	Cr(Cr(VI))	BL	/	
	Br(PBBs&PBDEs)	IN	N.D.	
80	Pb	BL	/	Pass
	Cd	BL	/	
	Hg	BL	/	
	Cr(Cr(VI))	BL	/	
	Br(PBBs&PBDEs)	BL	/	
81	Pb	BL	/	Pass
	Cd	BL	/	
	Hg	BL	/	
	Cr(Cr(VI))	BL	/	
	Br(PBBs&PBDEs)	BL	/	
82	Pb	BL	/	Pass
	Cd	BL	/	
	Hg	BL	/	
	Cr(Cr(VI))	BL	/	
	Br(PBBs&PBDEs)	BL	/	

**Bis-(2-ethylhexyl) Phthalate (DEHP), Benzyl butyl Phthalate (BBP), Dibutyl Phthalate (DBP) and Diisobutyl Phthalate(DIBP)**

Test Items	Result(mg/kg)		
	1+3+4	2	5+6+7
Bis-(2-ethylhexyl) Phthalate (DEHP)	N.D.	N.D.	N.D.
Benzyl butyl Phthalate (BBP)	N.D.	N.D.	N.D.
Dibutyl Phthalate (DBP)	N.D.	N.D.	N.D.
Diisobutyl Phthalate(DIBP)	N.D.	N.D.	N.D.
Conclusion	Pass	Pass	Pass

Test Items	Result(mg/kg)		
	8+12+14	9+10	11+16
Bis-(2-ethylhexyl) Phthalate (DEHP)	N.D.	N.D.	N.D.
Benzyl butyl Phthalate (BBP)	N.D.	N.D.	N.D.
Dibutyl Phthalate (DBP)	N.D.	N.D.	N.D.
Diisobutyl Phthalate(DIBP)	N.D.	N.D.	N.D.
Conclusion	Pass	Pass	Pass



Test Items	Result(mg/kg)		
	13	15+17	18
Bis-(2-ethylhexyl) Phthalate (DEHP)	N.D.	N.D.	N.D.
Benzyl butyl Phthalate (BBP)	N.D.	N.D.	N.D.
Dibutyl Phthalate (DBP)	N.D.	N.D.	N.D.
Diisobutyl Phthalate(DIBP)	N.D.	N.D.	N.D.
Conclusion	Pass	Pass	Pass

Test Items	Result(mg/kg)		
	19	20+21+29	22+24+25
Bis-(2-ethylhexyl) Phthalate (DEHP)	N.D.	N.D.	N.D.
Benzyl butyl Phthalate (BBP)	N.D.	N.D.	N.D.
Dibutyl Phthalate (DBP)	N.D.	N.D.	N.D.
Diisobutyl Phthalate(DIBP)	N.D.	N.D.	N.D.
Conclusion	Pass	Pass	Pass

Test Items	Result(mg/kg)		
	23	26+37	27+47
Bis-(2-ethylhexyl) Phthalate (DEHP)	N.D.	N.D.	N.D.
Benzyl butyl Phthalate (BBP)	N.D.	N.D.	N.D.
Dibutyl Phthalate (DBP)	N.D.	N.D.	N.D.
Diisobutyl Phthalate(DIBP)	N.D.	N.D.	N.D.
Conclusion	Pass	Pass	Pass

Test Items	Result(mg/kg)		
	28+36+40	30+33+34	31+35+38
Bis-(2-ethylhexyl) Phthalate (DEHP)	N.D.	N.D.	N.D.
Benzyl butyl Phthalate (BBP)	N.D.	N.D.	N.D.
Dibutyl Phthalate (DBP)	N.D.	N.D.	N.D.
Diisobutyl Phthalate(DIBP)	N.D.	N.D.	N.D.
Conclusion	Pass	Pass	Pass

Test Items	Result(mg/kg)		
	32	39	42+54
Bis-(2-ethylhexyl) Phthalate (DEHP)	N.D.	N.D.	N.D.
Benzyl butyl Phthalate (BBP)	N.D.	N.D.	N.D.
Dibutyl Phthalate (DBP)	N.D.	N.D.	N.D.
Diisobutyl Phthalate(DIBP)	N.D.	N.D.	N.D.
Conclusion	Pass	Pass	Pass

Test Items	Result(mg/kg)		
	43+70	44+45+46	48
Bis-(2-ethylhexyl) Phthalate (DEHP)	N.D.	N.D.	N.D.
Benzyl butyl Phthalate (BBP)	N.D.	N.D.	N.D.
Dibutyl Phthalate (DBP)	N.D.	N.D.	N.D.
Diisobutyl Phthalate(DIBP)	N.D.	N.D.	N.D.
Conclusion	Pass	Pass	Pass

Test Items	Result(mg/kg)		
	49	50+60	51
Bis-(2-ethylhexyl) Phthalate (DEHP)	N.D.	N.D.	N.D.
Benzyl butyl Phthalate (BBP)	N.D.	N.D.	N.D.
Dibutyl Phthalate (DBP)	N.D.	N.D.	N.D.
Diisobutyl Phthalate(DIBP)	N.D.	N.D.	N.D.
Conclusion	Pass	Pass	Pass

Test Items	Result(mg/kg)		
	52+53+61	55	56+57+58
Bis-(2-ethylhexyl) Phthalate (DEHP)	N.D.	N.D.	N.D.
Benzyl butyl Phthalate (BBP)	N.D.	N.D.	N.D.
Dibutyl Phthalate (DBP)	N.D.	N.D.	N.D.
Diisobutyl Phthalate(DIBP)	N.D.	N.D.	N.D.
Conclusion	Pass	Pass	Pass

Test Items	Result(mg/kg)		
	59+64	62+75	63+79
Bis-(2-ethylhexyl) Phthalate (DEHP)	N.D.	N.D.	N.D.
Benzyl butyl Phthalate (BBP)	N.D.	N.D.	N.D.
Dibutyl Phthalate (DBP)	N.D.	N.D.	N.D.
Diisobutyl Phthalate(DIBP)	N.D.	N.D.	N.D.
Conclusion	Pass	Pass	Pass

Test Items	Result(mg/kg)		
	65+66+67	68+73+76	69
Bis-(2-ethylhexyl) Phthalate (DEHP)	N.D.	N.D.	N.D.
Benzyl butyl Phthalate (BBP)	N.D.	N.D.	N.D.
Dibutyl Phthalate (DBP)	N.D.	N.D.	N.D.
Diisobutyl Phthalate(DIBP)	N.D.	N.D.	N.D.
Conclusion	Pass	Pass	Pass

Test Items	Result(mg/kg)			
	71	77	78	80+81+82
Bis-(2-ethylhexyl) Phthalate (DEHP)	N.D.	N.D.	N.D.	N.D.
Benzyl butyl Phthalate (BBP)	N.D.	N.D.	N.D.	N.D.
Dibutyl Phthalate (DBP)	N.D.	N.D.	N.D.	N.D.
Diisobutyl Phthalate(DIBP)	N.D.	N.D.	N.D.	N.D.
Conclusion	Pass	Pass	Pass	Pass

**Note:**

1.N.D. = Not Detected (<MDL)

MDL = Method Detection Limit

1mg/kg = 1ppm =0.0001%

/=Not Regulated or Not Applicable

2. BL = Below the XRF screening limit

IN = Further chemical test will be conducted when the screening result inconclusive

OL = Further chemical test will be conducted while the result is above the screening limit.

3. For metal samples, the sample is negative for Cr(VI), if the Cr(VI) concentration is less than 0.10  $\mu\text{g}/\text{cm}^2$ , the coating is considered a non- Cr(VI) based coating;

The sample is positive for Cr(VI), if the Cr(VI) concentration is greater than 0.13  $\mu\text{g}/\text{cm}^2$ ,

The sample coating is considered to contain Cr(VI);

The result is considered to be inconclusive, the Cr(VI) concentration is between the

0.10  $\mu\text{g}/\text{cm}^2$  and 0.13  $\mu\text{g}/\text{cm}^2$ , unavoidable coating variations may influence the determination.

Because the storage condition and production date of the sample are not known, the test results of the sample of hexavalent chromium can only represent the state of hexavalent chromium in the samples tested.

**Remark:**

1. When conducting the test for PBBs&PBDEs, XRF was introduced to screen Br Exclusively; When conducting the test for Hexavalent Chromium, XRF was introduced to screen Chromium exclusively.

2. According to the client's statement , the material of the sample(s) comply with RoHS directive 2011/65/EU Annex III Exemption, Corresponding exemption clause:

#1 6(c) Lead is exempted as copper alloy containing up to 4% lead by weight .

3. Part No.72A, 74A Resubmitted Date: Jan. 29, 2024.

4. As specified by client, only test the designated sample.



**Test Method:**

1. With reference to IEC 62321-1: 2013 Ed.1.0, IEC 62321-2:2021 Ed.2.0, IEC 62321-3-1:2013 Ed.1.0. XRF screening limits in mg/kg for regulated elements in various matrices.

Element	Limit of IEC 62321-3-1:2013 Ed.1.0 (mg/kg)		
	Polymers	Metals	Composite material
Pb	$BL \leq (700-3\sigma) < X$ $< (1300+3\sigma) \leq OL$	$BL \leq (700-3\sigma) < X$ $< (1300+3\sigma) \leq OL$	$BL \leq (500-3\sigma) < X$ $< (1500+3\sigma) \leq OL$
Cd	$BL \leq (70-3\sigma) < X <$ $(130+3\sigma) \leq OL$	$BL \leq (70-3\sigma) < X <$ $(130+3\sigma) \leq OL$	$LOD < X < (150+3\sigma)$ $\leq OL$
Hg	$BL \leq (700-3\sigma) < X$ $< (1300+3\sigma) \leq OL$	$BL \leq (700-3\sigma) < X$ $< (1300+3\sigma) \leq OL$	$BL \leq (500-3\sigma) < X$ $< (1500+3\sigma) \leq OL$
Cr	$BL \leq (700-3\sigma) < X$	$BL \leq (700-3\sigma) < X$	$BL \leq (500-3\sigma) < X$
Br	$BL \leq (300-3\sigma) < X$	/	$BL \leq (250-3\sigma) < X$

Note: BL= Below the XRF screening limit  
 OL=Over the XRF screening limit  
 X=The symbol "X" marks the region where further investigation is necessary.  
 3σ =The reproducibility of analytical instruments  
 LOD= Detection limit

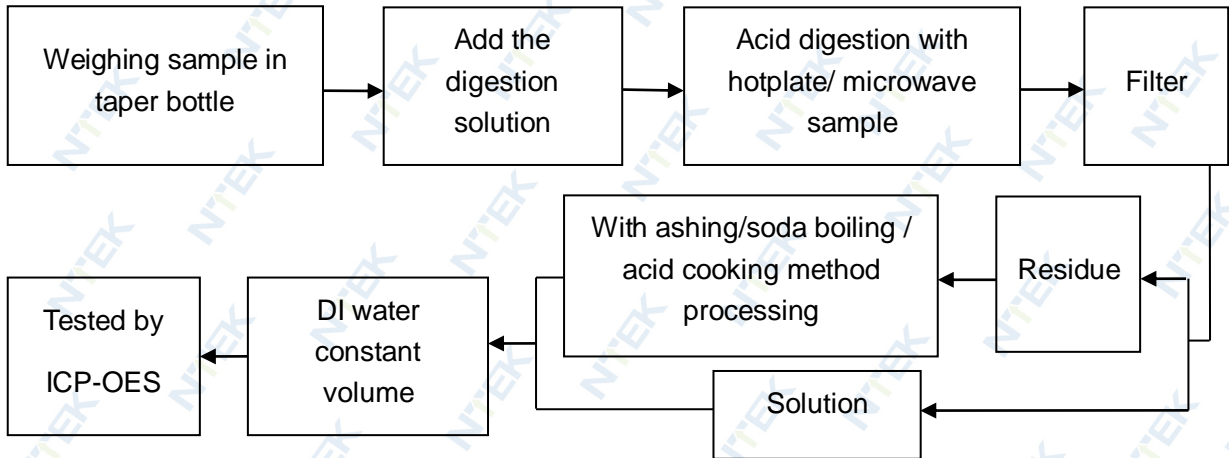
## 2. Chemical Test

Test item	Test method	Test instrument	MDL	Limit <sup>△</sup>
Lead (Pb)	IEC 62321-5:2013 Ed.1.0	ICP-OES	10 mg/kg	1000 mg/kg
Cadmium (Cd)	IEC 62321-5:2013 Ed.1.0	ICP-OES	10 mg/kg	100 mg/kg
Mercury (Hg)	IEC 62321-4:2013+AMD1:2017	ICP-OES	10 mg/kg	1000 mg/kg
Hexavalent Chromium(Cr(VI))	IEC 62321-7-1:2015 Ed.1.0	UV-Vis	0.10 µg/cm <sup>2</sup>	1000 mg/kg
	IEC 62321-7-2:2017 Ed.1.0		8 mg/kg	
Polybrominated Biphenyls(PBBs)	IEC 62321-6:2015 Ed.1.0	GC-MS	100 mg/kg	1000 mg/kg
Polybrominated, Diphenyl Ethers(PBDEs)	IEC 62321-6:2015 Ed.1.0	GC-MS	100 mg/kg	1000 mg/kg
Bis-(2-ethylhexyl) Phthalate (DEHP)	IEC 62321-8:2017 Ed.1.0	GC-MS	50 mg/kg	1000 mg/kg
Benzyl butyl Phthalate (BBP)	IEC 62321-8:2017 Ed.1.0	GC-MS	50 mg/kg	1000 mg/kg
Dibutyl Phthalate (DBP)	IEC 62321-8:2017 Ed.1.0	GC-MS	50 mg/kg	1000 mg/kg
Diisobutyl Phthalate (DIBP)	IEC 62321-8:2017 Ed.1.0	GC-MS	50 mg/kg	1000 mg/kg

<sup>△</sup>The limit is quoted from RoHS Directive (EU) 2015/863 amending Annex II to Directive 2011/65/EU.

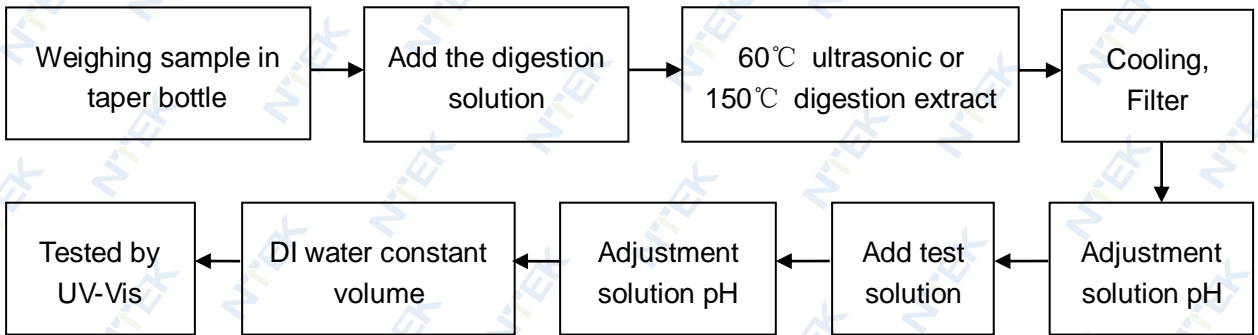
**Test Flow:**

1. Lead(Pb), Cadmium(Cd) , Mercury (Hg)

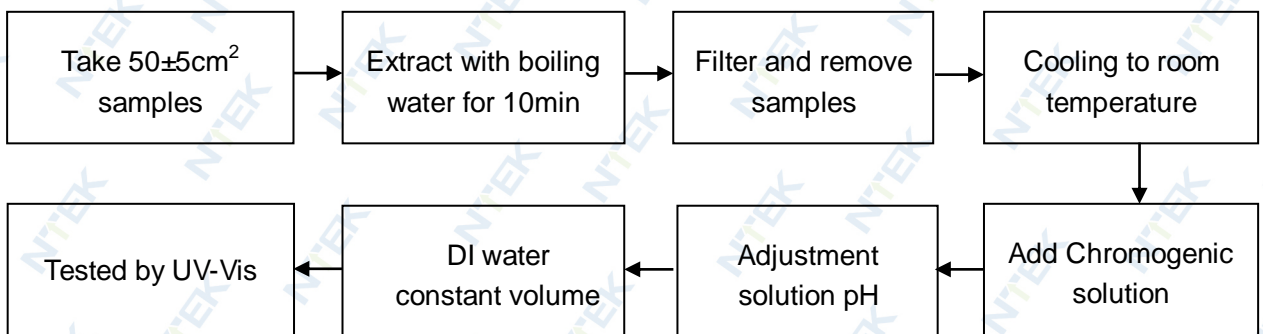


2. Hexavalent Chromium(Cr(VI))

2.1 Non- metal sample(s)

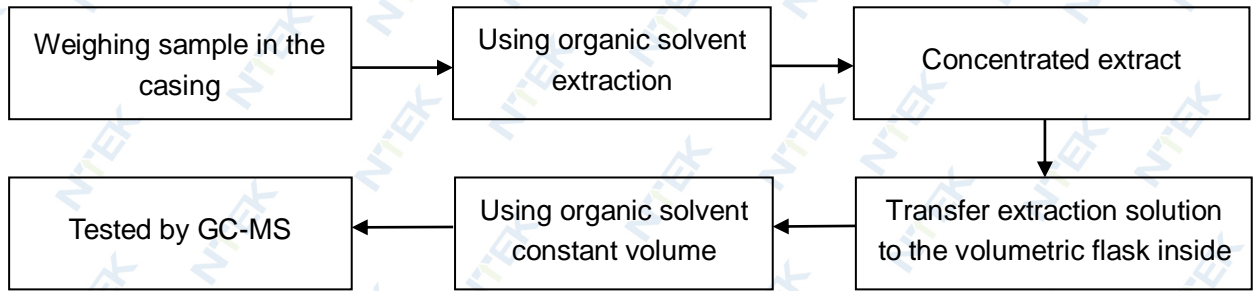


2.2 Metal sample(s)

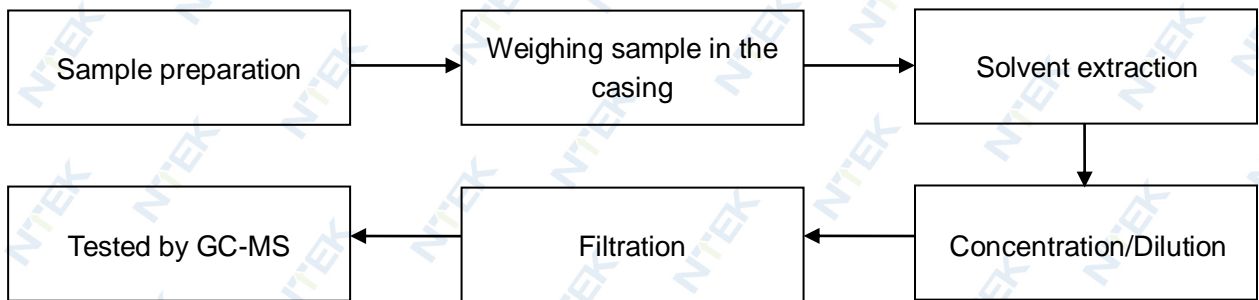




3. PBBs/ PBDEs



4. Phthalates



**Sample photo(s):**



Fig.1



Fig.2

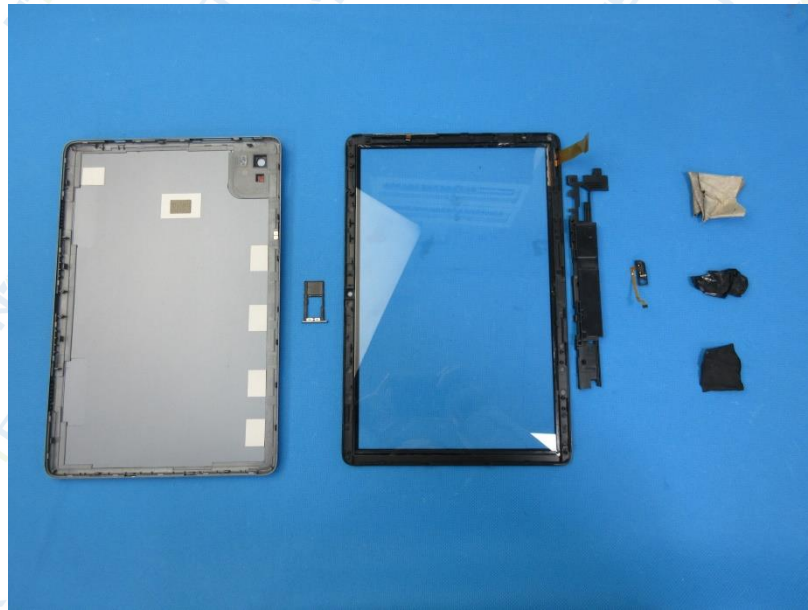


Fig.3



Fig.4



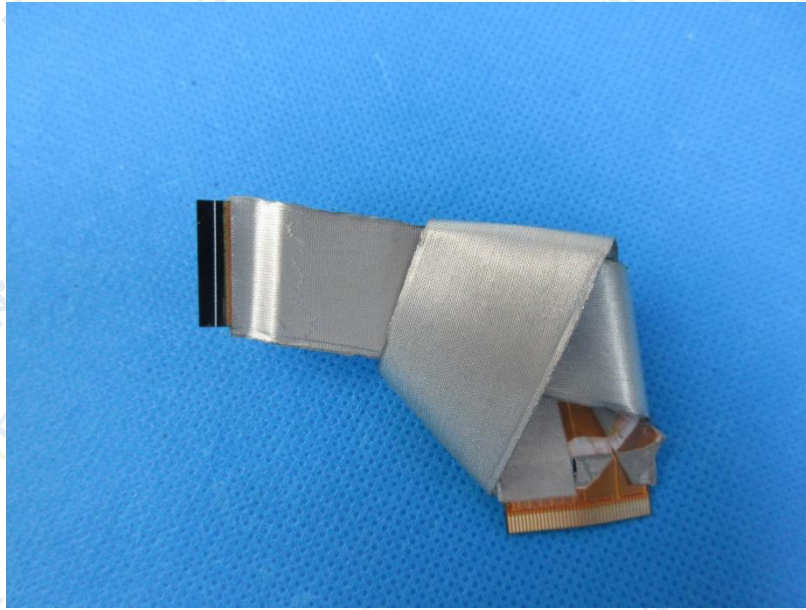


Fig.5

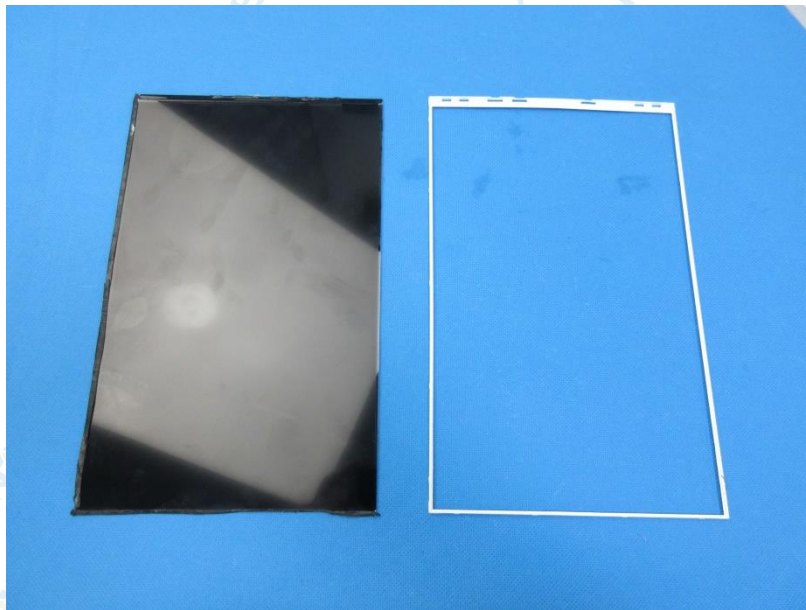


Fig.6

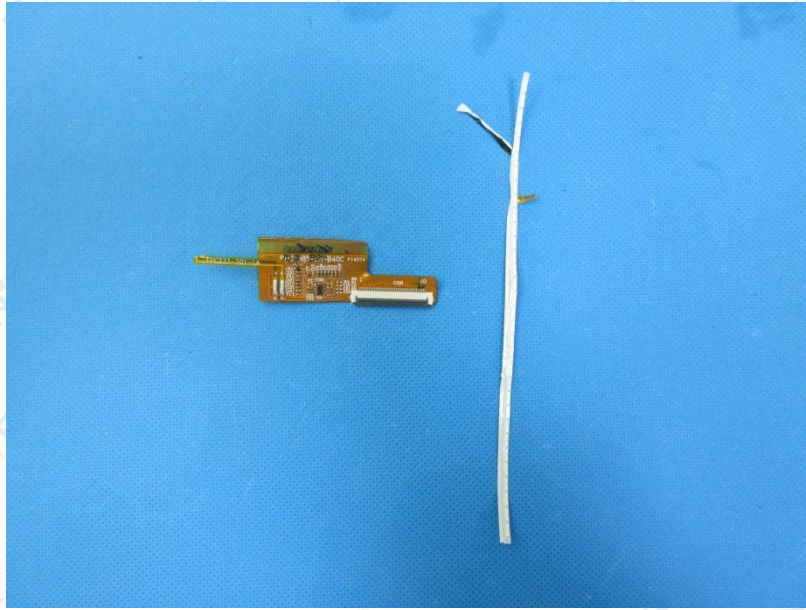


Fig.7

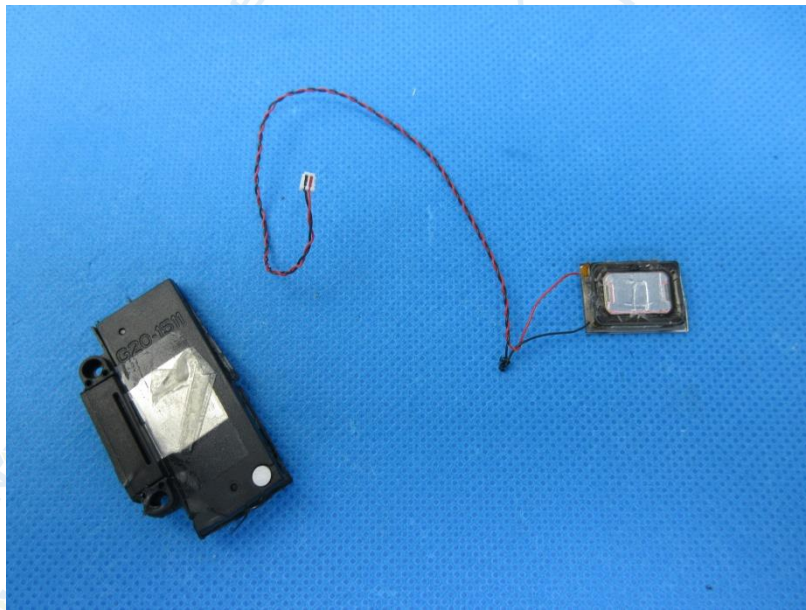


Fig.8



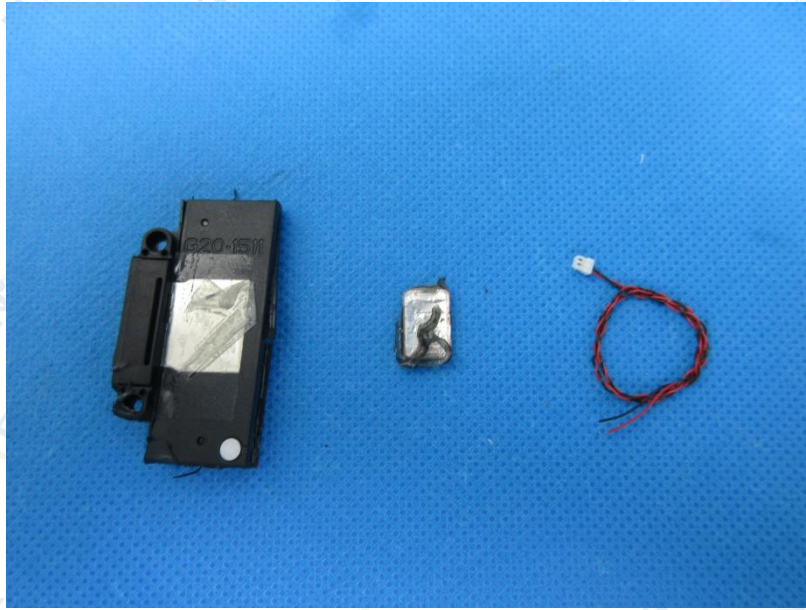


Fig.9

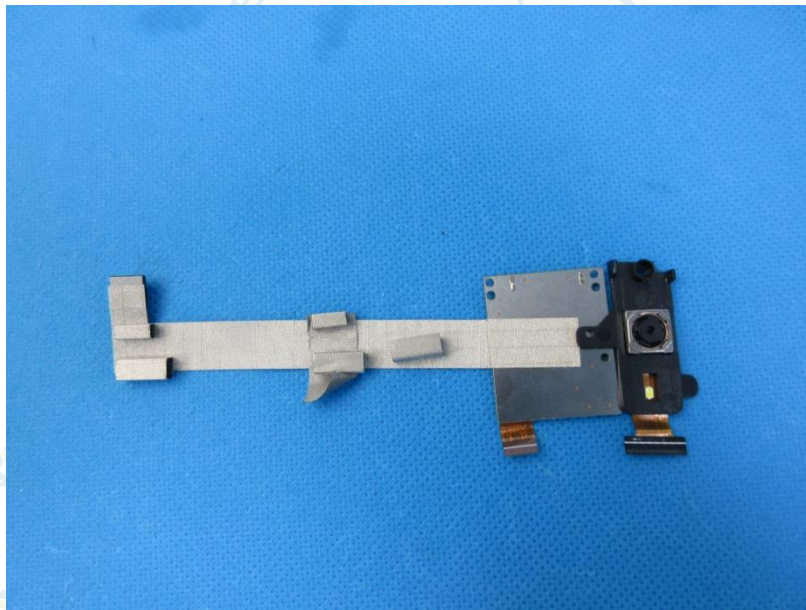


Fig.10



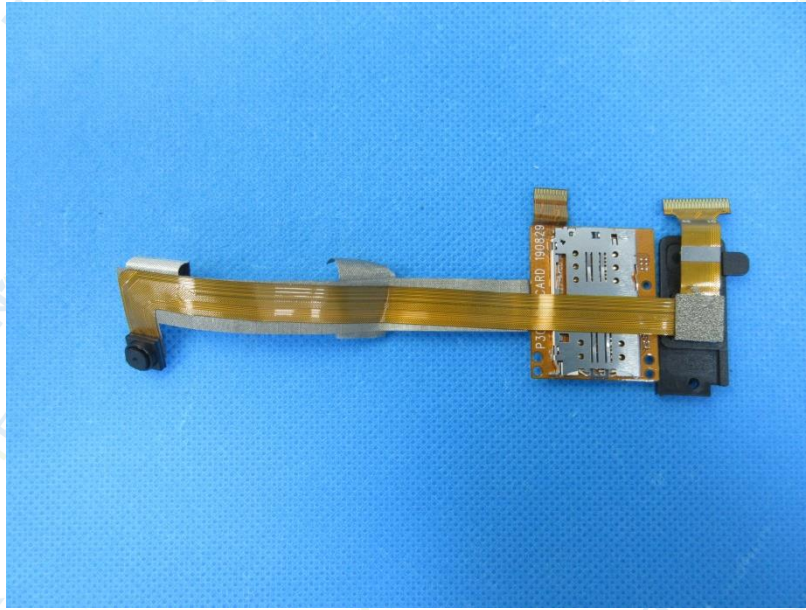


Fig.11



Fig.12



Fig.13

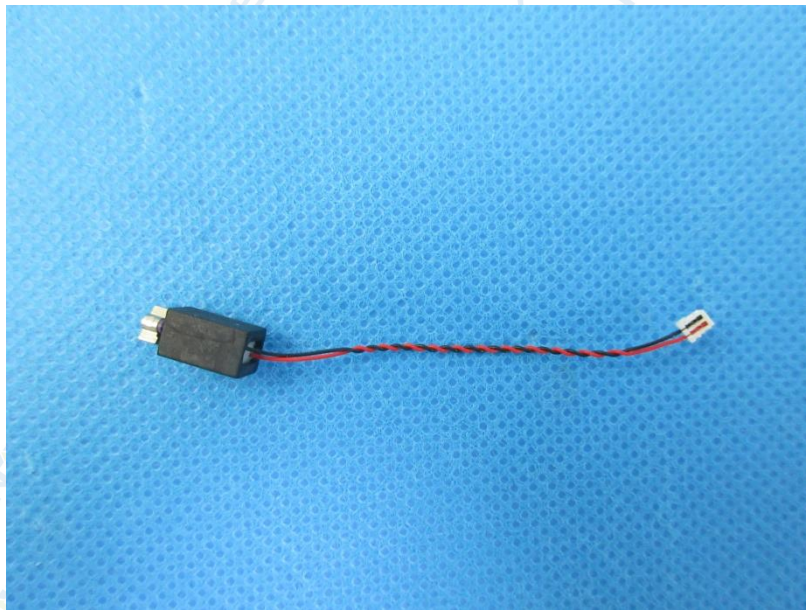


Fig.14



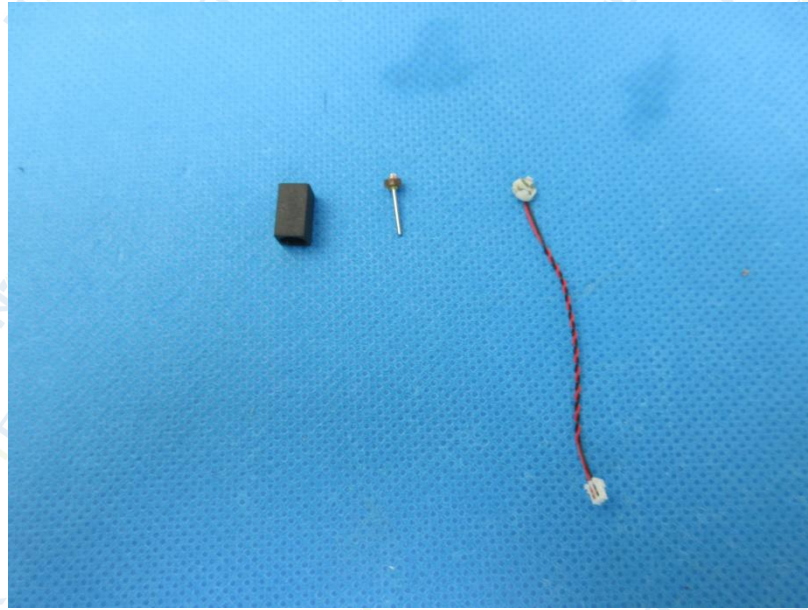


Fig.15



Fig.16





Fig.17

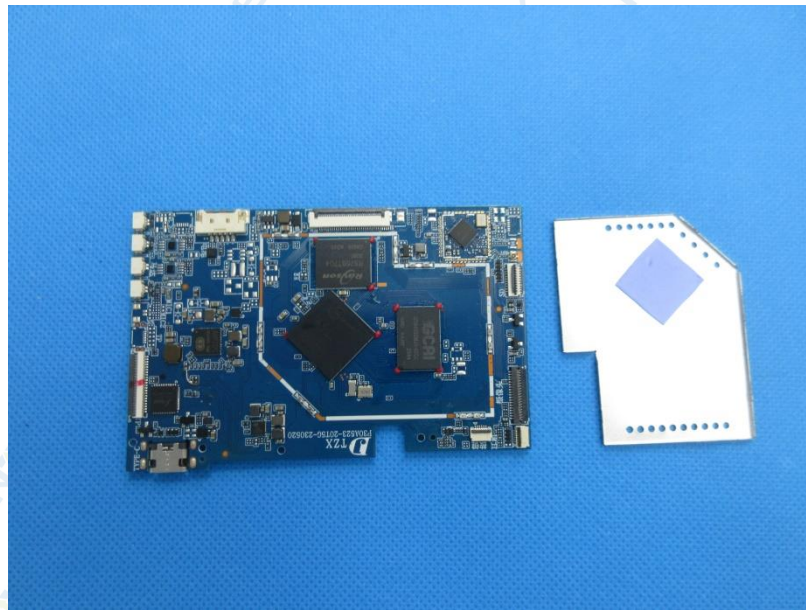


Fig.18

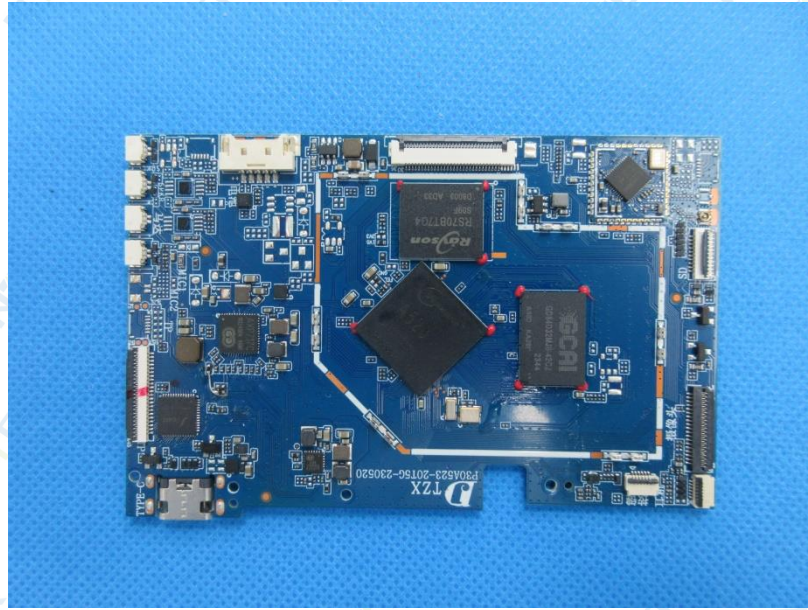


Fig.19

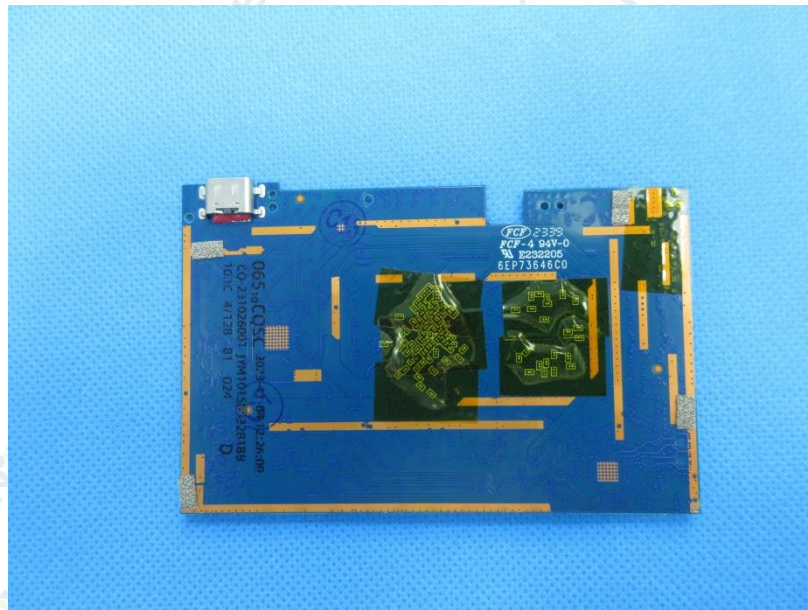


Fig.20



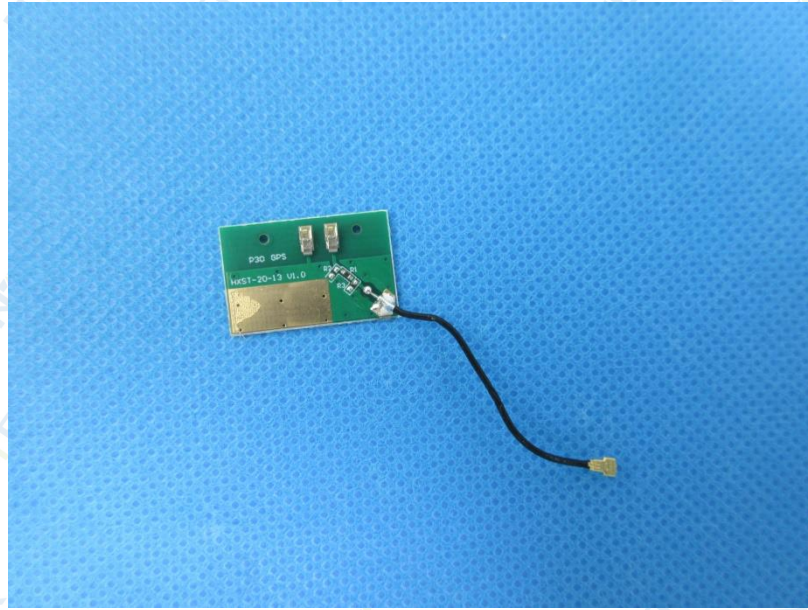


Fig.21



Fig.22



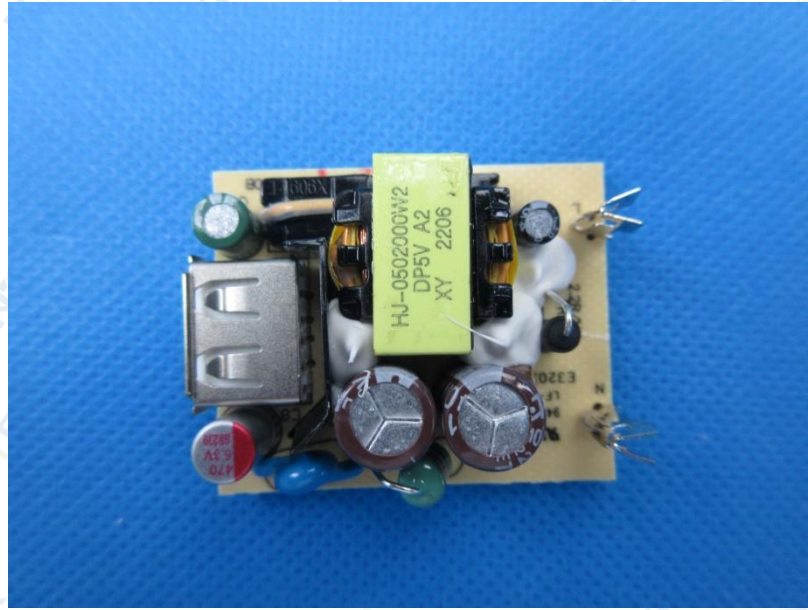


Fig.23

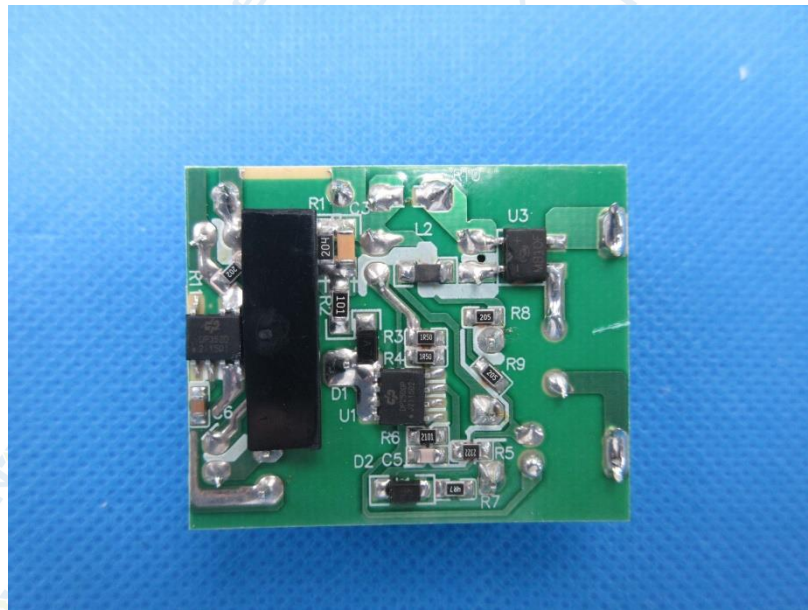


Fig.24



Fig.25



Fig.26



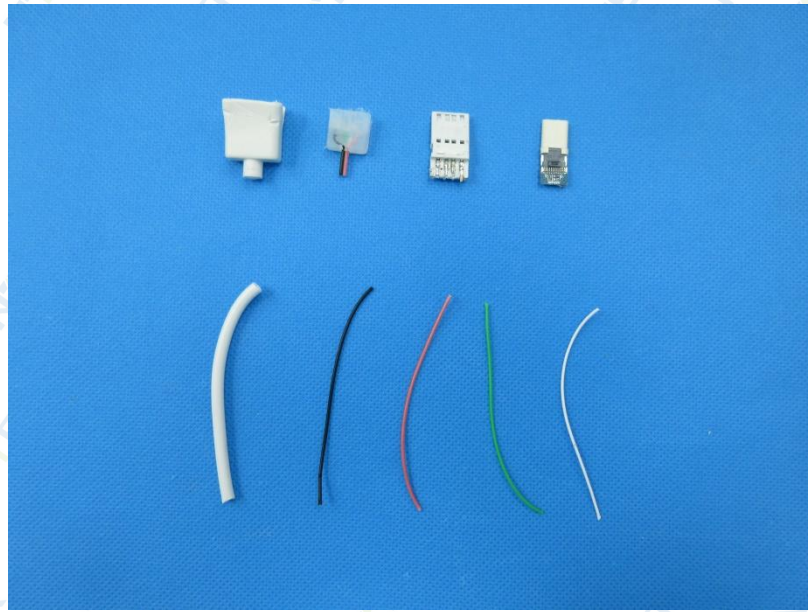


Fig.27



Fig.28



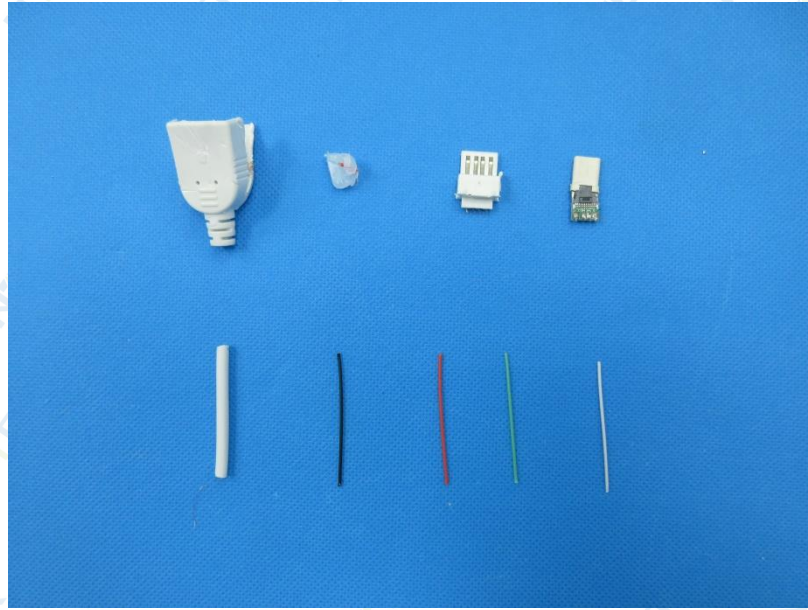


Fig.29



Fig.30



Fig.31



Fig.32





Fig.33



Fig.34



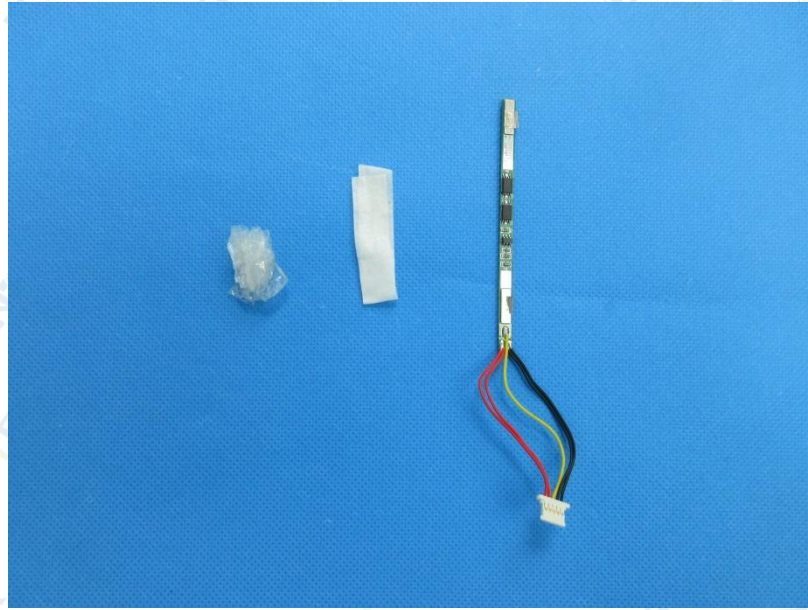


Fig.35



Fig.36

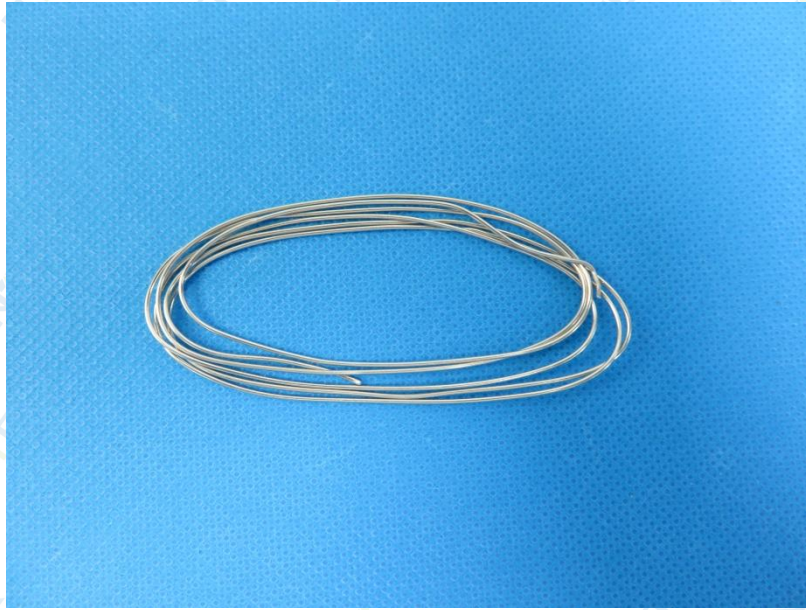


Fig.37

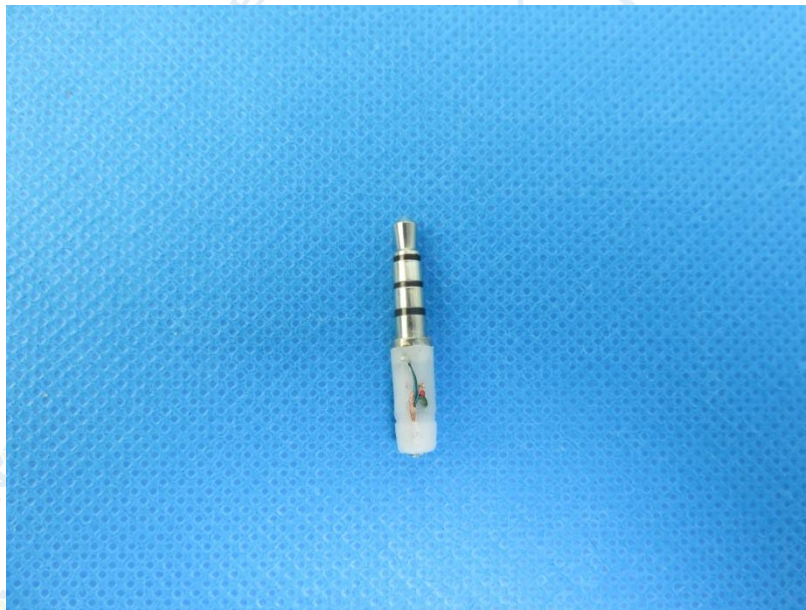


Fig.38

\*\*\*\*End of Report\*\*\*\*

The test results or data in this report will be used only for education, scientific research, enterprise product development and internal quality control or other purposes.

The test report is effective only with both signature and specialized stamp, The result(s) shown in this report refer only to the sample(s) tested. Without written approval of NTEK, this report can't be reproduced except in full.